

ROLLS®

neo

19_{mm} / 28_{mm} / 35_{mm} diameter
M E T A L P O L E S



S I M P L Y | M I N I M A L

NEO IS AN AFFORDABLE RANGE OF SIMPLY MINIMAL METAL CURTAIN POLES AND CO-ORDINATED ACCESSORIES REFLECTING THE DESIRE FOR SLEEK DESIGN IN THE MODERN HOME.





Black Nickel Effect



Chrome Effect



Spun Brass Effect



Stainless Steel Effect

THE 19MM, 28MM & 35MM RANGES ARE AVAILABLE IN FOUR CONTEMPORARY METAL FINISHES WITH A CHOICE OF FOUR FINIAL DESIGNS IN EACH DIAMETER.



Ball
19mm

Ball
28mm/35mm



Bullet



Stud



Trumpet

THE QUALITY OF
THE METAL AND
THE ATTENTION
TO DETAIL IN THE
FITTINGS MAKE NEO
A PLEASURE TO
INSTALL AND USE.



NEO POLES ARE MADE FROM HEAVY GAUGE METAL; THE STAINLESS STEEL EFFECT POLE USES A REAL STAINLESS STEEL FOIL AND THE OTHER FINISHES ARE ELECTRO-PLATED MAKING THEM MORE DURABLE AND LESS PRONE TO CHIPPING.





Quality Rings:

The solid, fixed eyelet, metal rings are lined with nylon so that they run quietly and smoothly.



Quality Brackets:

The brackets shown, are solid cast. The extendable cup bracket (available in 28mm only) shown, enables the pole to be fixed to uneven points on your wall.



19mm

COMPLETE PACK

THE COMPLETE PACK

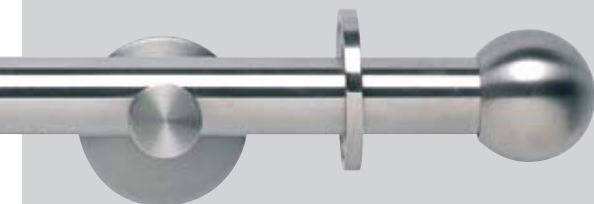
INCLUDES EVERYTHING YOU NEED
TO INSTALL YOUR CURTAIN POLE,
INCLUDING BRACKETS AND RINGS.

Size (cm)			
120	180	240	300



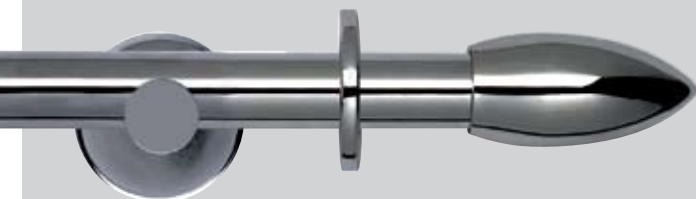
19mm pole suitable for light and medium weight
curtains up to 11kgs

Comes with Cylinder Bracket



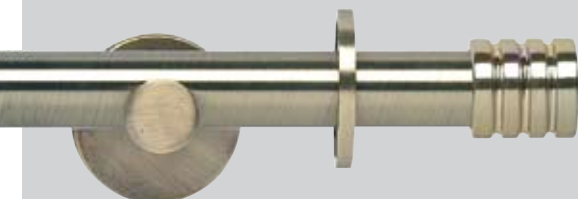
Ball (Shown in Stainless Steel)

Stainless Steel Effect **7100R/Size**
Spun Brass Effect **7102R/Size**
Chrome Effect **1662R/Size**
Black Nickel Effect **1680R/Size**



Bullet (Shown in Black Nickel)

Stainless Steel Effect **7106R/Size**
Spun Brass Effect **7108R/Size**
Chrome Effect **1664R/Size**
Black Nickel Effect **1682R/Size**



Stud (Shown in Spun Brass)

Stainless Steel Effect **7103R/Size**
Spun Brass Effect **7105R/Size**
Chrome Effect **1663R/Size**
Black Nickel Effect **1681R/Size**



Trumpet (Shown in Chrome)

Stainless Steel Effect **7109R/Size**
Spun Brass Effect **7111R/Size**
Chrome Effect **1665R/Size**
Black Nickel Effect **1683R/Size**



Ball (Shown in Stainless Steel)

Stainless Steel Effect **1606R/Size**

Spun Brass Effect **1607R/Size**

Chrome Effect **2155R/Size**

Black Nickel Effect **2175R/Size**



Bullet (Shown in Chrome)

Stainless Steel Effect **1602R/Size**

Spun Brass Effect **1603R/Size**

Chrome Effect **2153R/Size**

Black Nickel Effect **2173R/Size**

Size (cm)			
120	180	240	300

Stud (Shown in Black Nickel)

Stainless Steel Effect **1600R/Size**

Spun Brass Effect **1601R/Size**

Chrome Effect **2152R/Size**

Black Nickel Effect **2172R/Size**



Trumpet (Shown in Spun Brass)

Stainless Steel Effect **1604R/Size**

Spun Brass Effect **1605R/Size**

Chrome Effect **2154R/Size**

Black Nickel Effect **2174R/Size**

28mm

COMPLETE PACK

Comes with Extendable
Cup Bracket



28mm pole suitable for light and medium weight
curtains up to 11kgs.

35mm

COMPLETE PACK



Ball (Shown in Black Nickel)

Stainless Steel Effect **2195R/Size**

Spun Brass Effect **2503R/Size**

Chrome Effect **2520R/Size**

Black Nickel Effect **2547R/Size**

Comes with Cylinder Bracket



Bullet (Shown in Spun Brass)

Stainless Steel Effect **2193R/Size**

Spun Brass Effect **2501R/Size**

Chrome Effect **2518R/Size**

Black Nickel Effect **2545R/Size**

Size (cm)				
120	180	240	300	360

PACK CONTENTS FOR ALL POLE DIAMETERS

Pole Size	120cm	180cm	240cm	300cm	360cm*
Poles	1	1	1	2	2
Joining Piece				1	1
Brackets	2	2	2	3	3
Rings**	12	18	24	30	36
Finials	2	2	2	2	2

*360cm pole only available in 35mm diameter

**Rings not contained in eyelet pole pack



Stud (Shown in Stainless Steel)

Stainless Steel Effect **2192R/Size**

Spun Brass Effect **2500R/Size**

Chrome Effect **2517R/Size**

Black Nickel Effect **2544R/Size**



Trumpet (Shown in Chrome)

Stainless Steel Effect **2194R/Size**

Spun Brass Effect **2502R/Size**

Chrome Effect **2519R/Size**

Black Nickel Effect **2546R/Size**



35mm Suitable for light, medium and heavy weight curtains
11kgs and over.

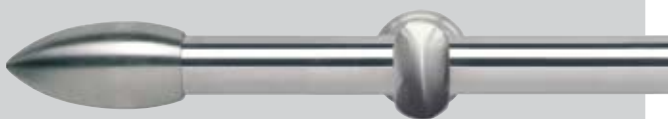
28mm

EYELET POLE COMPLETE PACK

A 28mm complete pole pack without the rings to allow for an eyelet curtain heading. The bracket is an extendable cup with up to 155mm extension from wall to allow for depth of heading.

Size (cm)			
120	180	240	300

300cm pole comes in two pieces that are joined together with a connector (supplied in the pack).



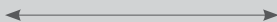
Bullet

Stainless Steel Effect **1629R/Size**
 Spun Brass Effect **1630R/Size**
 Chrome Effect **2156R/Size**
 Black Nickel Effect **2176R/Size**



Ball

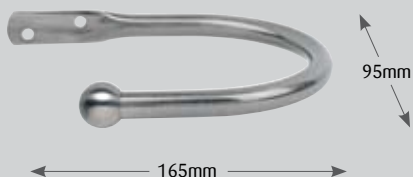
Stainless Steel Effect **1631R/Size**
 Spun Brass Effect **1632R/Size**
 Chrome Effect **2151R/Size**
 Black Nickel Effect **2171R/Size**



128mm to 155mm fully extended



HOLDBACKS (SINGLE) - Finish off the look with a co-ordinating hold back.



Ball (same size for all) projection 95mm

Stainless Steel Effect **7331R**
 Spun Brass Effect **7333R**
 Chrome Effect **1666R**
 Black Nickel Effect **1684R**



NEO COMPONENT RANGE

NEO WORKS WITH MOST WINDOW SHAPES AND SIZES INCLUDING BAYS AND RECESSES. IF YOU WANT SOMETHING DIFFERENT TO THE COMPLETE PACK YOU CAN MAKE YOUR OWN FROM COMPONENTS...

SINGLE POLE - Need to fix a wider window span? Prefer the cylinder bracket to the extendable 28mm bracket? Shown in 28mm Stainless Steel Effect with extendable Cup Bracket with Ball finial.



WALL FIXED - There are two types of wall bracket: the cylinder bracket and the 28mm only extendable cup bracket. Both are suitable as side or centre brackets.

Item	You will need:
a. Pole	Depends on window size. Single poles come in lengths of 120/150/180/240cm. For longer lengths two poles can be joined to make spans of up to 480cm.
b. Finials	1 pair
c. Brackets	2 brackets for single pole lengths, otherwise 3.
d. Rings	1 ring per 10cm
e. Joiner	If joining two poles together



19, 28 & 35mm



CEILING FIXED - Use a ceiling bracket where there is limited space above the window or where the wall is weak.

As Wall Fixed but use Ceiling Bracket(s) (see table at back for coding)

c.



RECESS FIXED - Enables pole to be fixed between walls, or to a side wall at one side.

As Wall Fixed but 1 recess bracket at each end. Centre bracket dependent on pole length.

c.



19 mm



28 & 35mm

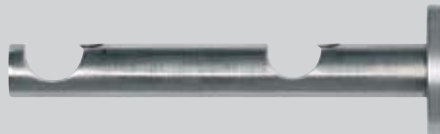
19/28MM DOUBLE POLE

A double layer of curtains can be used for extra privacy, light filtering, warmth or simply for effect. A 28mm pole hangs at the front with a 19mm pole at the back. Used on straight windows.



Item	You will need:
a. Pole	19mm pole & 28mm pole. Quantity depends on window size. Single poles come in lengths of 120/150/180/240cm. For longer lengths two poles can be joined to make spans of up to 480cm.
b. Finials	1 x 19mm pair (suggest 'Stud'), 1 x 28mm pair
c. Brackets	2/3 Double Brackets dependent on pole length
d. Rings	1 ring per 10cm
e. Joiner	If joining two poles together

c.



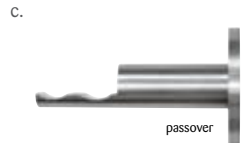
BAY WINDOWS

Corner elbow joints, passing brackets and passing rings can be used to fit Neo to bay windows. As the corner joint is an 'elbow' design the curtain will need to be helped around it. Suitable for 2 bend bays; fixes to wall.



Works with 2 bend bays with up to 60° bends

Item	You will need:
a. Pole	Dependent on bay width. Single poles come in lengths of 120/150/180/240cm. Poles will need to be cut to size and joined at corner joints and in the centre.
b. Finials	1 pair
c. Brackets	4 Passover (one either side of corner joint). Used with the passing rings to allow the curtain to run past the brackets. 3 Wall brackets (2 at each side and 1 centre)
d. Rings	'C' Passing Rings. Passing Rings - 1 ring per 10cm. Allow the curtains to pass over the brackets.
e. Joiner	If joining two poles together



19, 28 & 35mm



19mm



28 & 35mm

Components: Follow the 'You will Need' guide. The catalogue numbers are overleaf. Here's an example:
 "I want to order a 28mm, Stainless Steel pole for a bay window. The window measures 3 metres."

Step 1: The Pole

Select pole diameter & finish. When taking note of code add length of pole(s) required to item code.

Chosen Style	Catalogue Number	Quantity Needed
28mm, Stainless Steel Finish, 3m	2130R/150	2

Step 2: Finials

Select finial designs & finish.

Chosen Style	Catalogue Number	Quantity Needed
Ball Finials, 28mm, Stainless Steel Finish	2131R	pair

Step 3: Brackets

Select brackets & finish.

Chosen Style	Catalogue Number	Quantity Needed
Passover Brackets, 28mm, Stainless Steel Finish	1622R	4
Wall Brackets, 28mm cup, Stainless Steel Finish	1618R	3

Step 4: Rings

Select rings & finish.

Chosen Style	Catalogue Number	Quantity Needed
C Rings, 28mm, Stainless Steel Finish	1620R	5 Packs

Step 5: Joiner

Select joiner & finish.

Chosen Style	Catalogue Number	Quantity Needed
Joiner, 28mm, Stainless Steel Finish	2135R	1

Step 6: Corner Joints

Select corner joints & finish.

Chosen Style	Catalogue Number	Quantity Needed
Bay Corner Joints, 28mm, Stainless Steel Finish	1610R	2

Step 7: Holdbacks

Select holdbacks & finish.

Chosen Style	Catalogue Number	Quantity Needed
Holdbacks, Stainless Steel Finish	7331R	2

POLE ONLY



Pole Length (cm)				
120	180	240	300	500

Pole Size	120cm	150cm	180cm	240cm	300cm	360cm	480cm	500cm*
Component Pole Lengths	1 x 120	1 x 150	1 x 180	1 x 240	2 x 150	2 x 180	2 x 240	1 x 500
Joining Piece Needed					Yes	Yes	Yes	
Brackets Needed	2	2	2	2	3	3	3	
Packs of Rings (6 per pack, 10 rings per metre)	2	3	3	4	5	6	8	

* This is a contract length designed to be cut down to size. It is available in stainless steel only.

19mm Pole Only		28mm Pole Only		35mm Pole Only	
Stainless Steel Effect	1650R/size	Stainless Steel Effect	2130R/size	Stainless Steel Effect	2219R/size
Spun Brass Effect	1656R/size	Spun Brass Effect	2136R/size	Spun Brass Effect	2511R/size
Black Nickel Effect	2121R/size	Black Nickel Effect	2186R/size	Black Nickel Effect	2555R/size
Chrome	1674R/size	Chrome	2166R/size	Chrome	2538R/size

FINIAL ONLY (pair)



19mm Finial Only

	19mm Ball (length 29mm)	19mm Bullet (length 57mm)	19mm Stud (length 26mm)	19mm Trumpet (length 47mm)
Stainless Steel Effect	1651R	Stainless Steel Effect 1653R	Stainless Steel Effect 1652R	Stainless Steel Effect 1654R
Spun Brass Effect	1657R	Spun Brass Effect 1655R	Spun Brass Effect 1658R	Spun Brass Effect 1660R
Black Nickel Effect	2126R	Black Nickel Effect 2129R	Black Nickel Effect 2127R	Black Nickel Effect 2128R
Chrome	1675R	Chrome 1677R	Chrome 1676R	Chrome 1678R

28mm Finial Only

	28mm Ball (length 87mm)	28mm Bullet (length 91mm)	28mm Stud (length 34mm)	28mm Trumpet (length 63mm)
Stainless Steel Effect	2131R	Stainless Steel Effect 2133R	Stainless Steel Effect 2132R	Stainless Steel Effect 2134R
Spun Brass Effect	2137R	Spun Brass Effect 2139R	Spun Brass Effect 2138R	Spun Brass Effect 2140R
Black Nickel Effect	2187R	Black Nickel Effect 2189R	Black Nickel Effect 2188R	Black Nickel Effect 2190R
Chrome	2167R	Chrome 2168R	Chrome 2169R	Chrome 2170R

35mm Finial Only

	35mm Ball (length 105mm)	35mm Bullet (length 91mm)	35mm Stud (length 34mm)	35mm Trumpet (length 63mm)
Stainless Steel Effect	2266R	Stainless Steel Effect 2268R	Stainless Steel Effect 2267R	Stainless Steel Effect 2269R
Spun Brass Effect	2512R	Spun Brass Effect 2514R	Spun Brass Effect 2513R	Spun Brass Effect 2515R
Black Nickel Effect	2556R	Black Nickel Effect 2557R	Black Nickel Effect 2558R	Black Nickel Effect 2559R
Chrome	2542R	Chrome 2543R	Chrome 2540R	Chrome 2541R

BRACKETS ONLY

Cylinder Brackets

(single)



19mm cylinder bracket (projection 92mm) (backplate diameter 44mm)		28mm cylinder bracket (projection 122mm) (backplate diameter 63mm)		35mm cylinder bracket (projection 122mm) (backplate diameter 63mm)	
Stainless Steel Effect	7337R	Stainless Steel Effect	1612R	Stainless Steel Effect	2198R
Spun Brass Effect	7339R	Spun Brass Effect	1613R	Spun Brass Effect	2506R
Black Nickel Effect	1686R	Black Nickel Effect	2179R	Black Nickel Effect	2550R
Chrome	1668R	Chrome	2159R	Chrome	2523R

Cup Brackets

(single)



28mm cup bracket (projection 128 - 155mm) (backplate diameter 50mm)	
Stainless Steel Effect	1618R
Spun Brass Effect	1619R
Black Nickel Effect	2182R
Chrome	2162R

Passover Bracket

(single)



19mm (projection 74mm) (backplate diameter 44mm)		28mm (projection 114mm) (backplate diameter 60mm)		35mm (projection 110mm) (backplate diameter 64mm)	
Stainless Steel Effect	7347R	Stainless Steel Effect	1622R	Stainless Steel Effect	2210R
Spun Brass Effect	7348R	Spun Brass Effect	1623R	Spun Brass Effect	2509R
Black Nickel Effect	1690R	Black Nickel Effect	2184R	Black Nickel Effect	2553R
Chrome	1672R	Chrome	2164R	Chrome	2536R

Double Brackets

(single)



19/28mm (projection 138mm) (backplate diameter 64mm)	
Stainless Steel Effect	1616R
Spun Brass Effect	1617R
Black Nickel Effect	2181R
Chrome	2161R

Ceiling Bracket

(single)



19mm (projection 72mm) (backplate diameter 43mm)		28mm (projection 77mm) (backplate diameter 43mm)		35mm (projection 83mm) (backplate diameter 44mm)	
Stainless Steel Effect	1624R	Stainless Steel Effect	1626R	Stainless Steel Effect	2211R
Spun Brass Effect	1625R	Spun Brass Effect	1627R	Spun Brass Effect	2510R
Black Nickel Effect	2120R	Black Nickel Effect	2185R	Black Nickel Effect	2554R
Chrome	1673R	Chrome	2165R	Chrome	2537R

Recess Brackets

(pair)



19mm



28mm & 35mm

19mm (projection 30mm) (backplate diameter 35mm)		28mm (projection 24mm) (backplate diameter 42mm)		35mm (projection 24mm) (backplate diameter 50mm)	
Stainless Steel Effect	7343R	Stainless Steel Effect	1614R	Stainless Steel Effect	2199R
Spun Brass Effect	7344R	Spun Brass Effect	1615R	Spun Brass Effect	2507R
Black Nickel Effect	1688R	Black Nickel Effect	2180R	Black Nickel Effect	2551R
Chrome	1670R	Chrome	2160R	Chrome	2141R

RINGS ONLY

Rings (pack of 6)



	19mm		28mm		35mm
Stainless Steel Effect	7334R	Stainless Steel Effect	1608R	Stainless Steel Effect	2196R
Spun Brass Effect	7336R	Spun Brass Effect	1609R	Spun Brass Effect	2504R
Black Nickel Effect	1685R	Black Nickel Effect	2177R	Black Nickel Effect	2548R
Chrome	1667R	Chrome	2157R	Chrome	2521R

'C' Rings (pack of 6) only for use with cylinder brackets



	19mm		28mm		35mm
Stainless Steel Effect	7345R	Stainless Steel Effect	1620R	Stainless Steel Effect	2200R
Spun Brass Effect	7346R	Spun Brass Effect	1621R	Spun Brass Effect	2508R
Black Nickel Effect	1689R	Black Nickel Effect	2183R	Black Nickel Effect	2552R
Chrome	1671R	Chrome	2163R	Chrome	2535R

JOINERS & CORNER JOINTS ONLY

Joiner (single)

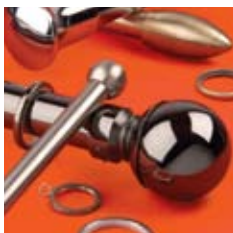


	19mm (length 98mm)		28mm (length 120mm)		35mm (length 120mm)
One Colour	1661R	One Colour	2135R	One Colour	2208R

Bay Corner Joint (single)



	19mm		28mm		35mm
Stainless Steel Effect	7340R	Stainless Steel Effect	1610R	Stainless Steel Effect	2197R
Spun Brass Effect	7342R	Spun Brass Effect	1611R	Spun Brass Effect	2505R
Black Nickel Effect	1687R	Black Nickel Effect	2178R	Black Nickel Effect	2549R
Chrome	1669R	Chrome	2158R	Chrome	2522R



neo

Ref: 001022 01 09 10

— HALLIS HUDSON —

Hallis Hudson Group Ltd, Unit B1, Red Scar Business Park, Preston, Lancashire PR2 5NJ